

## What You Can Do

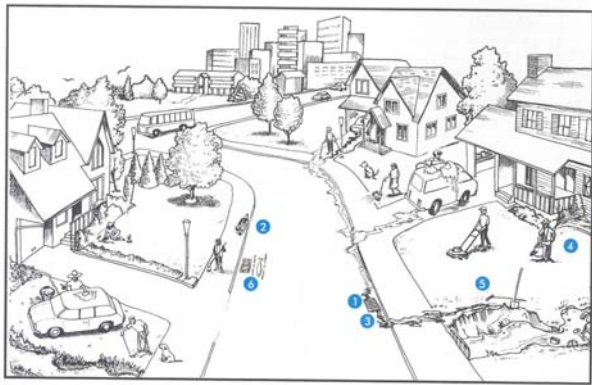
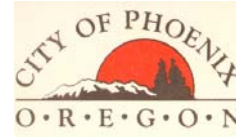
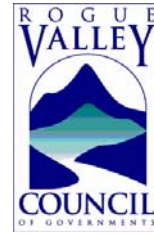


Image courtesy of Clean Water Services, Hillsboro, Oregon

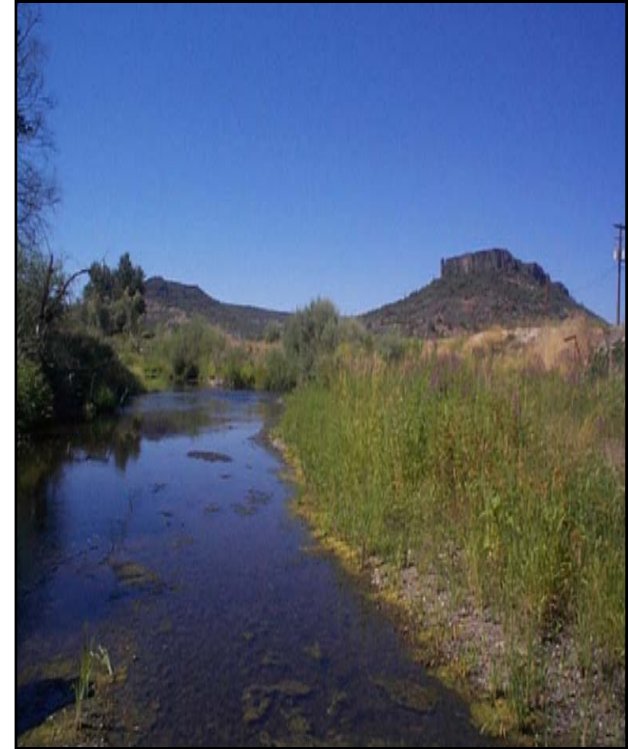
1. Prevent water other than rain water from entering storm drains and ditches.
2. Properly dispose of or recycle motor oil, antifreeze, paint, solvents, and other materials.
3. Keep leaves, grass clippings, pet waste, soil and litter out of storm drains, ditches, creeks, ponds, and wetlands.
4. Use non-toxic alternatives, and reduce or eliminate pesticide use.
5. Plant native species to protect bare soil, prevent erosion, and create wildlife habitat.
6. Stencil storm drains and participate in activities to learn more about stormwater.

### Regional Partners Managing Stormwater in the Bear Creek Watershed

- Cities of Medford, Ashland, Phoenix, Talent, and Central Point
- Jackson County
- Rogue Valley Council of Governments
- Rogue Valley Sewer Services



## Stormwater Management in the Bear Creek Valley



*Clean Water Starts With You!*



# Impacts of Stormwater

## What is Stormwater?

Stormwater runoff is flow generated from hardened surfaces (e.g., streets, driveways, rooftops, and parking lots), agricultural land and other areas as a result of precipitation.



## Where does stormwater go?

Stormwater flows over the surface and enters the nearest storm drain or drainage ditch. From the drains and ditches, the water is discharged **untreated** into the nearest stream or river.



# Stormwater Impacts

## Flooding (Water Quantity)

Increased hardened surfaces in urban areas results in more water draining directly into streams. The increased flow causes flooding and erosion of stream banks.



Flooding of road and drainage ditch in Jackson County.

Turbid flow and bank erosion in Meyers Creek following an intense rainfall.



## Pollution (Water Quality Degradation)

Major pollutants found in stormwater runoff include:

- sediment
- nutrients
- petroleum
- litter
- bacteria
- fertilizers

Oil from parking lot entering storm system



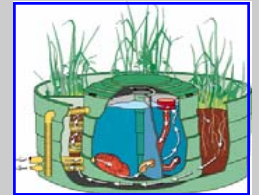
# Stormwater Solutions



Education and Outreach



Changes in Local Policies



Best Management Practices (BMPs)



Erosion Prevention and Sediment Control

To report stormwater quality concerns contact:

Rogue Valley Sewer Services

- For concerns in Central Point, Talent, Phoenix, White City, and Jackson County contact RVSS at 779-4144
- City of Medford at 774-2600
- City of Ashland at 488-5587

Local Public Works or Planning Departments

Ashland - 488-5587 or 488-5305

Medford - 774-2100 or 774-2380

Phoenix - 535-2226 or 535-2050

Talent - 535-3828 or 535-7401

Central Point - 664-7602 or 664-3324

Jackson County - 774-8183 or 774-6900